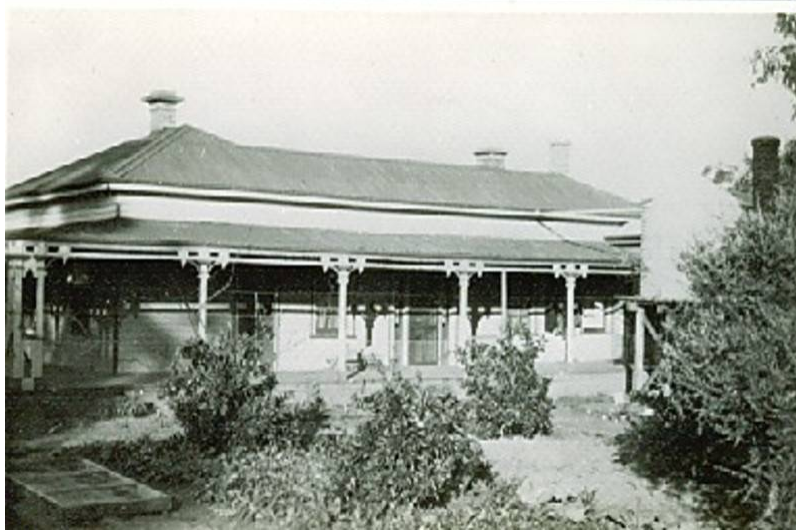


Victorian Heritage Database Report

South Wonwondah Homestead & Woolshed



Location:

Henty Highway, Wonwondah North, MCKENZIE CREEK VIC 3401 - Property No B2850

Heritage Status / Level of Significance:

Regional

Heritage Inventory (HI) Number:

Listing Authority: HI

Statement of Significance:

In 1865 'South Wonwondah' pastoral station was annexed from the original 'Wonwondah' run taken up by Cruikshank and Brodie in 1843. Several changes of ownership occurred before the earliest horizontal slab homestead was reputedly erected c 1854 with timber shingles under later c.g.i. roof in a typical Colonial vernacular style. The conventional weatherboard additions were built in c 1882.

The 'South Wonwondah' homestead and vertical timber slab construction woolshed are representative of the earliest period of pastoral expansion in Western Victoria. The structures are relatively rare examples of Colonial vernacular construction most likely erected as an outstation to the main 'Wonwondah' homestead during the occupancy of Quartermann and Rutherford. Original 'Johnson of Manchester' roofing iron remains on the dilapidated woolshed.

The 'South Wonwondah' station original slab homestead of 1854 is periodically maintained and still occupied. The slab woolshed is in a deteriorated condition although still partially utilised.

AHC Citation

Slab portion of homestead only. Classified 27/01/1972

Woolshed. Classified 09/11/1972

Heritage Study / Consultant	
Construction Date Range	
Architect / Designer	
Municipality	HORSHAM RURAL CITY
Other names	
Hermes number	68620
Property number	B2850

This place/object may also be State heritage listed. Check the Victorian Heritage Database. For further details, contact the local Council or go to Planning Schemes Online