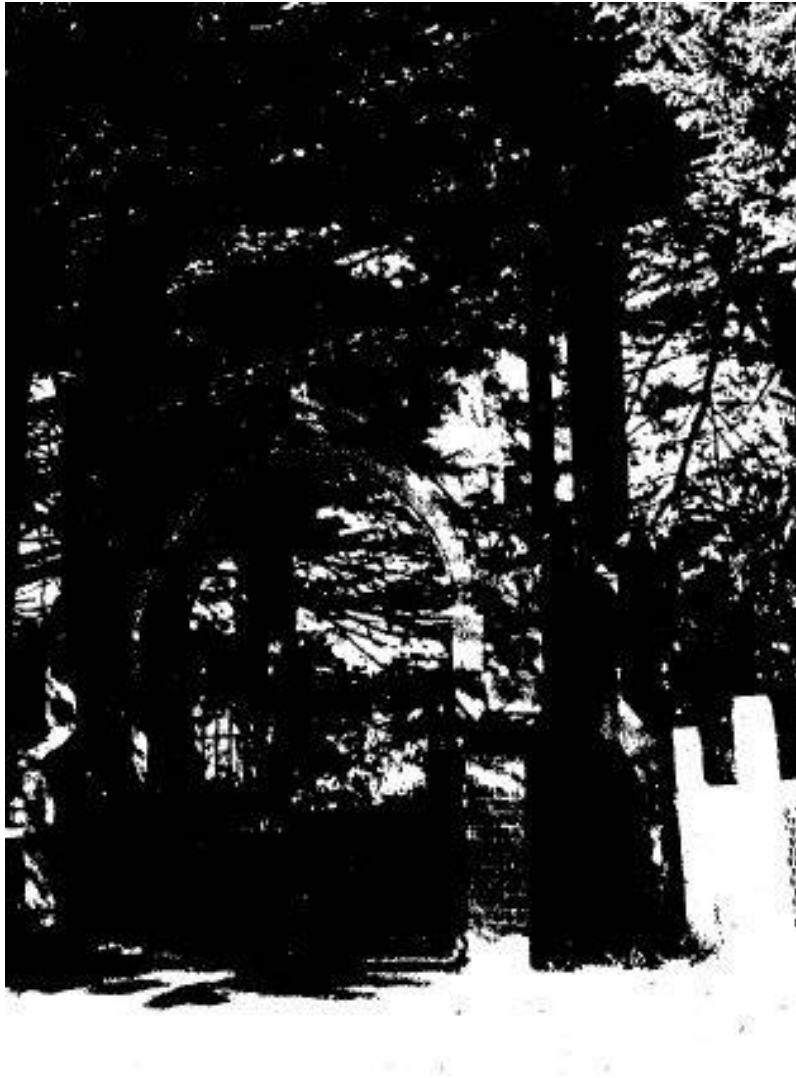


Victorian Heritage Database Report  
**Ellis Gateway at Nillumbik Cemetery**

---



**Location:**

35 Main Street DIAMOND CREEK, NILLUMBIK SHIRE

**Heritage Status / Level of Significance:**

Included in Heritage Overlay

**Heritage Overlay Number:** HO226

**Listing Authority:** Nillumbik Shire

**Statement of Significance:**

Nillumbik Cemetery is of regional significance

- for its association with the early history of the township and as a record of the pioneering families of the district
- for the significant plantings: pines that date to the foundation and laying out of the cemetery in the late 1860s, and a boundary cypress row that dates to the 1920s
- for its associated structures, such as the timber sexton's cottage which help complete the sense of period at the cemetery

The Ellis gateway is of state significance

- as exhibiting a rare design in ornamental gateways, which is also relatively large for the size of the cemetery
- for its association with William Ellis, notable early settler and benefactor

**Description**

Tuck pointed red brick, distinctive Tudor revival Ellis gateway, with a rendered entablature bearing the letters JANVA VITAE on one side and William Ellis's name on the other with the date 1897 (bequest), a basalt impost course and plinth, rendered buttress copings, wrought-iron gates, timber picketed gates set in adjacent chain-wire on timber frame and shaped posts; weatherboarded (chamfer board) octagonal pavilion store with finial, corrugated iron roof. Layout simple linear rows, white quartz surfaced paths now grown over, some iron markers. Italian and/or funereal or Bhutan ('Cupressus torulosa') cypress among planting with mature Monterey cypress hedge at front, oleander just inside entrance gateway (similarities to St Helena Greensborough, nearby?), some mature native planting ('Acacia melanoxylon') and inappropriate raised native garden beds at entrance and later shelters. Recent wire and paling fences to side and rear.

Graves include an old group on the main drive.

Memorials to: William SCameron, killed on the Victorian Railways 20.1.1886 erected by fellow workmen, made by WH Williams of Hotham; Ann Gregory 27.1.1891; : Children of John & Honor Lawrey, 1869- (made by Cross & Co., Simpsons Road, Collingwood); Rosamond Wilson (Cross & Co) 7.1878 et. a1.; Boyd family; Godburgh family grave and garden via Wilson family; Cummings; Jackson; George Stebbings; James Whyte, killed in the Diamond Mine, 12.5.1908 (white marble, poor condition).

Other masons include Chambers & Clutten, Corben,

Early Communities

Community growth- local government

Heritage Study / Consultant	Nillumbik - Nillumbik Shire Heritage Study, Graeme Butler & Assoc, 1997
Construction Date Range	
Architect / Designer	
Municipality	NILLUMBIK SHIRE

Other names	
Hermes number	64012
Property number	

*This place/object may also be State heritage listed. Check the Victorian Heritage Database. For further details, contact the local Council or go to Planning Schemes Online*