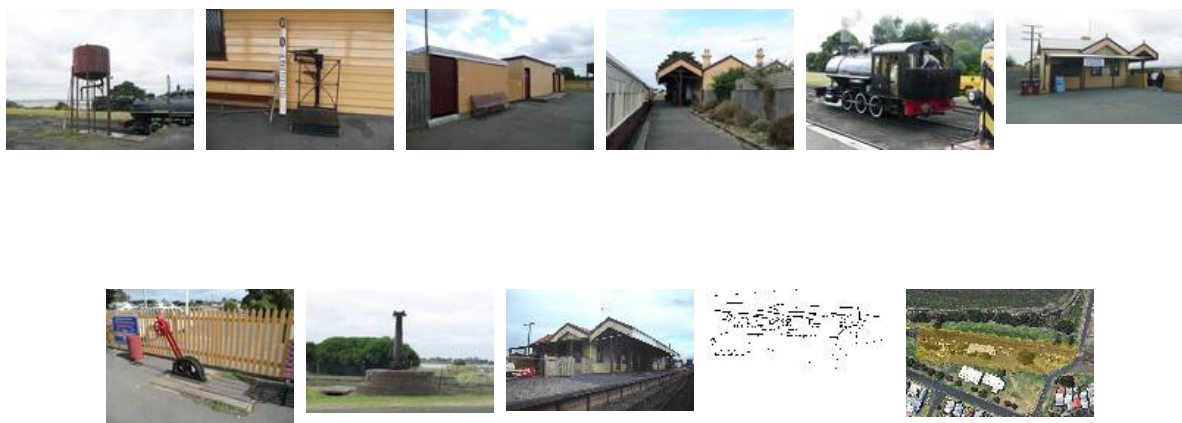


Victorian Heritage Database Report **QUEENSCLIFF RAILWAY STATION**



Location:

20 SYMONDS STREET (AND WHARF STREET) QUEENSCLIFF, QUEENSCLIFFE BOROUGH

Heritage Status / Level of Significance:

Registered

Victorian Heritage Register (VHR) Number: H1586

Listing Authority: VHR

Heritage Overlay Number: HO56

Statement of Significance:

What is significant?

Queenscliff Railway Station was constructed for the Victorian Railways in 1881, by William Swanson and is located on the foreshore of Swan Bay, on the Geelong-Queenscliff line. It consists of a timber gable roofed station building with former residence. It features a large open waiting area designed to cater for holiday traffic, and distinctive barges that are also found on the posted gable roofed verandah. It includes various corrugated iron yard outbuildings, an adjoining crane base and non-original water tower.

How is it significant?

Queenscliff Railway Station is historically and architecturally significant to the State of Victoria.

Why is it significant?

Queenscliff Railway Station is architecturally significant as an essentially intact example of a country railway station built to a unique design rather than to a standard pattern. Featuring a large waiting area, the station was designed principally to cater for large numbers of tourists at peak holiday times.

Queenscliff Railway Station is historically significant in that it is the earliest of the tourist-oriented type of railway station and is closely associated with the development of tourism in Victoria and the historic development of the Queenscliff district. The station is also historically significant for its associations with the 'light lines' era (c.1869 - c.1884).

Heritage Study / Consultant	
Construction Date Range	1881 -
Architect / Designer	Greene, William
Municipality	QUEENSCLIFFE BOROUGH
Other names	
Hermes number	2692
Property number	

This place/object may also be State heritage listed. Check the Victorian Heritage Database. For further details, contact the local Council or go to Planning Schemes Online