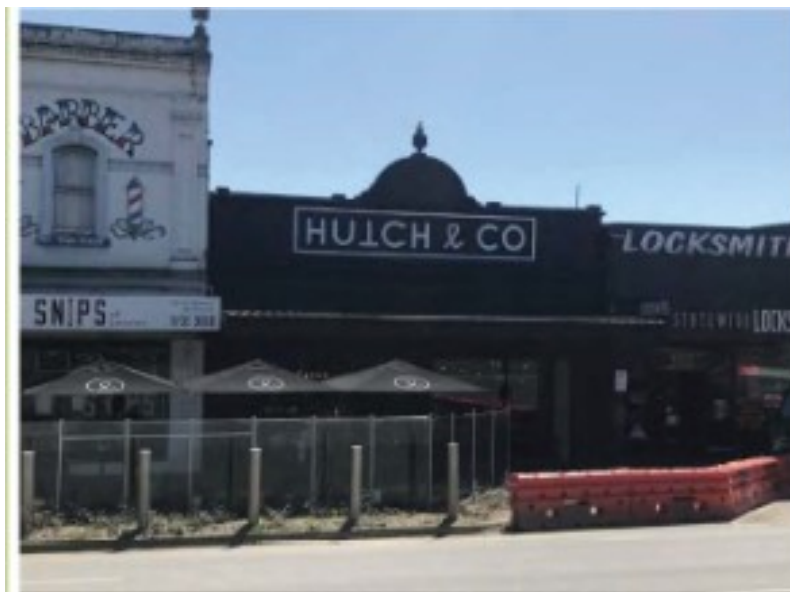


Victorian Heritage Database Report
Former Hutchinson's Store



Location:

251 STREET MAIN LILYDALE, YARRA RANGES SHIRE

Heritage Status / Level of Significance:

Included in Heritage Overlay

Statement of Significance:

What is significant? The property at 252 Main Street, Lilydale (otherwise known as the Former Hutchinson's Store) is significant. The form, scale and detailing of the late Victorian Boom-Era parapet and hipped roof is of local significance. The ground floor entrance, awning and rear extensions beyond the hipped roof form are not significant. How is it significant? The Former Hutchinson's Store is of local historical and aesthetic significance to the township of Lilydale and Yarra Ranges Council more broadly. Why is it significant? The Former Hutchinson's Store at 251 Main Street is a remnant example of the late nineteenth century, single-storey brick shops that proliferated in nineteenth and early twentieth century Main Street of Lilydale. The Former Hutchinson's Store is historically significant to the township of Lilydale as a remnant example of a boom-era Victorian commercial premises from a key period of development and commerce in Lilydale, having continually operated from the site since the early 1890s. (Criterion A) The Former Hutchinson's Store is aesthetically significant for its modified, yet characteristic, boomer late Victorian style rendered parapet with a central semi-circular pediment flanked by scrolls and surmounted by a remnant decorative urn, as well as a prominent cornice at ceiling level on the facade. (Criterion E)

Heritage Study / Consultant	Lilydale Heritage Gap Study - Citations 2023, Extent Heritage Pty Ltd, 2023
Construction Date Range	
Architect / Designer	
Municipality	YARRA RANGES SHIRE
Other names	
Hermes number	212961
Property number	

This place/object may also be State heritage listed. Check the Victorian Heritage Database. For further details, contact the local Council or go to Planning Schemes Online