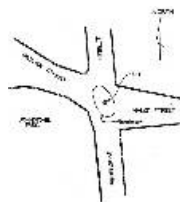


Victorian Heritage Database Report  
**BELCHER DRINKING FOUNTAIN**

---



**Location:**

MALOP STREET GEELONG, GREATER GEELONG CITY

**Heritage Status / Level of Significance:**

Registered

**Victorian Heritage Register (VHR) Number: H1116**

**Listing Authority: VHR**

**Heritage Overlay Number: HO111****Statement of Significance:**

What is significant?

The Belcher Drinking Fountain was presented to the Town of Geelong by retiring Mayor Councillor GF Belcher in 1874. The cast iron fountain, which was imported from Andrew Handyside and Co, iron founders in England, consists of a cylindrical structure surrounded by Corinthian columns and surmounted with a cupid figure and lantern.

How is it significant?

The Belcher Drinking Fountain is of architectural, aesthetic and historical significance to Victoria.

Why is it significant?

The Belcher Drinking Fountain is architecturally significant as a rare and intact example of an early imported cast iron drinking fountain, which is still operating. The structure is a representative example of iron work produced by Andrew Handyside and Co, accomplished iron founders from Derby, England. The design of the fountain is important for artistic reasons relating to its derivation from a Classical inspired Monument of Lysicrates at Athens, Greece.

The Belcher Drinking Fountain is historically significant as a representation of Temperance Movement activities that advocated the restriction or abolition of the use of alcoholic drinks. The fountain is also important for its association with George F. Belcher, who was a pioneer in the Geelong and Wimmera districts. He was sub-treasurer in Geelong, Vice-Consul for Norway and Sweden and Mayor of Geelong on two occasions.

Heritage Study / Consultant	
Construction Date Range	1874 -
Architect / Designer	Handyside, Andrew & Co
Municipality	GREATER GEELONG CITY
Other names	
Hermes number	1933
Property number	

*This place/object may also be State heritage listed. Check the Victorian Heritage Database. For further details, contact the local Council or go to Planning Schemes Online*