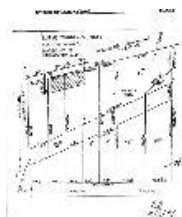


Victorian Heritage Database Report

LIME-BURNING KILN



Location:

PRINCES HIGHWAY AND 110 LEMINS ROAD (REAR) WAURN PONDS, GREATER GEELONG CITY

Heritage Status / Level of Significance:

Registered

Victorian Heritage Register (VHR) Number: H0866

Listing Authority: VHR

Heritage Overlay Number: HO377

Statement of Significance:

SOURCE: REPORT TO MINISTER

STATEMENT OF SIGNIFICANCE

LIME BURNING WAS CARRIED ON FROM ABOUT 1835 ON THE NEPEAN PENINSULA AND AT LIMEBURNERS POINT GEELONG, WHILE THE INDUSTRY PROVIDED THE BASIS FOR SETTLEMENT AT PORTSEA, RYE AND SORRENTO. FROM THE 1860S LIMEBURNING CAME TO BE CONDUCTED ON A MORE PROFESSIONAL BASIS. LARGER AND MORE SUBSTANTIAL KILNS WERE BUILT AND IT IS THE REMAINS OF THESE WHICH COMPRISE THE BULK OF THAT WHICH SURVIVES OF NINETEENTH CENTURY LIMEBURNING BUSINESSES.

THE WAURN PONDS KILN IS BELIEVED TO HAVE BEEN BUILT IN 1882 IN AN AREA NOTED FOR LIME PRODUCTION AND QUARRYING ACTIVITIES. IT WAS KNOWN FIRST AS HOLDSWORTH'S KILN AND LATER AS MCCANN'S LIME KILN.

THE MCCANN FAMILY AND NOTABLY, NICHOLAS MCCANN, THE CELEBRATED STONEMASON, ENTREPRENEUR AND QUARRYMAN, AND HIS SON, PETER, PLAYED A SPECIAL ROLE IN VICTORIA'S LIME INDUSTRY AND BUILDING TRADE. PETER MCCANN WAS BORN IN PARRAMATTA, NEW SOUTH WALES, AND CAME TO VICTORIA IN 1837. IN 1844 HIS FATHER, NICHOLAS, OPENED A QUARRY UNDER THE NAME OF MCCANN AND SONS AT HIS PROPERTY, FAIRVIEW FARM, AT CERES. IT WAS REPUTED TO HAVE GIVEN A VERY GOOD QUALITY FREESTONE. WITH THE HELP OF HIS SON, PETER, MCCANN AND SONS PROVIDED STONE FOR ST PAUL'S CATHEDRAL AND WESLEY COLLEGE IN MELBOURNE AS WELL AS BUILDINGS IN MANY OTHER PARTS OF THE COLONY. PETER MCCANN WAS THE OWNER OF THE CELEBRATED WAURN PONDS QUARRIES. HE ALSO OWNED A QUARRY AT BATESFORD. PETER MCCANN WAS AN IMPORTANT CERES CITIZEN, A MEMBER OF THE LOCAL ROAD BOARD AND A JUSTICE OF THE PEACE.

THE MCCANN FAMILY WAS ASSOCIATED WITH LIMEBURNING ACTIVITIES AT FYANSFORD, BATESFORD AND WAURN PONDS. DURING THE 1880S, LIME PRODUCED FROM KILNS AT LARA AND WAURN PONDS WAS CONSIDERED SUPERIOR FOR BUILDING PURPOSES TO THAT FROM LIMEBURNERS POINT. TODAY, NO LIME KILNS SURVIVE AT LARA. THE WAURN PONDS LIME KILNS OPERATED UNTIL THE 1970S. THE EXTANT KILN SURVIVES, ALTHOUGH COVERED BY OVERBURDEN FROM ADJACENT QUARRYING OPERATIONS CARRIED OUT BY CR WILTSHIRE, WHO OWNS BOTH THE PRESENT QUARRY AND THE OLD KILN.

THE WAURN PONDS LIME KILN IS OF STATE IMPORTANCE FOR A NUMBER OF REASONS:

THE KILN IS AN IMPORTANT SURVIVING INDUSTRIAL STRUCTURE IN AN AREA NOTED FOR LIME PRODUCTION AND QUARRYING ACTIVITIES. FROM THE 1880S, WHEN IT WAS BUILT, LIME PRODUCED BY KILNS AT WAURN PONDS AND LARA WAS CONSIDERED SUPERIOR TO THAT OF LIMEBURNERS POINT FOR BUILDING CONSTRUCTION IN THE WESTERN DISTRICT.

THE WAURN PONDS KILN IS ONE OF A VERY FEW SURVIVING 19TH CENTURY VICTORIAN KILNS, IT IS RELATIVELY INTACT AND DATES FROM A MOST IMPORTANT PERIOD IN THE HISTORY OF THE LIME INDUSTRY. ONLY SEVEN SURVIVING KILN SITES HAVE BEEN POSITIVELY IDENTIFIED, TWO OF WHICH (FOSSIL BEACH AND FYANSFORD) CONTAIN RELICS ONLY, AND ONE OF WHICH (LIMEBURNERS POINT, GEELONG) CONTAINS FOUR KILNS IN VARYING STAGES OF DERELICTION.

THE BRICK WAURN PONDS KILN IS AN EXAMPLE OF TRADITIONAL 19TH CENTURY TECHNOLOGY USED IN THE LIMEBURNING INDUSTRY IN VICTORIA. IT IS OF PARAMOUNT IMPORTANCE TO INDUSTRIAL ARCHAEOLOGY IN VICTORIA.

IT IS OF HISTORIC IMPORTANCE FOR ITS ASSOCIATIONS WITH THE NOTABLE MCCANN FAMILY, WHICH FROM THE LATE 1830S PLAYED A SIGNIFICANT ROLE IN THE QUARRYING, LIMEBURNING AND BUILDING TRADES IN THE WESTERN DISTRICT, IN MELBOURNE AND, INDEED, THROUGHOUT VICTORIA.

Heritage Study / Consultant	
Construction Date Range	1890 -
Architect / Designer	
Municipality	GREATER GEELONG CITY
Other names	
Hermes number	1203
Property number	

This place/object may also be State heritage listed. Check the Victorian Heritage Database. For further details, contact the local Council or go to Planning Schemes Online