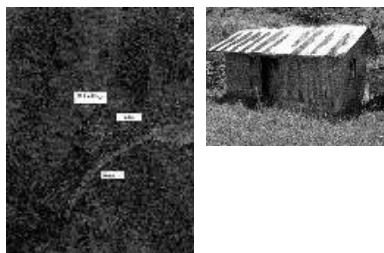
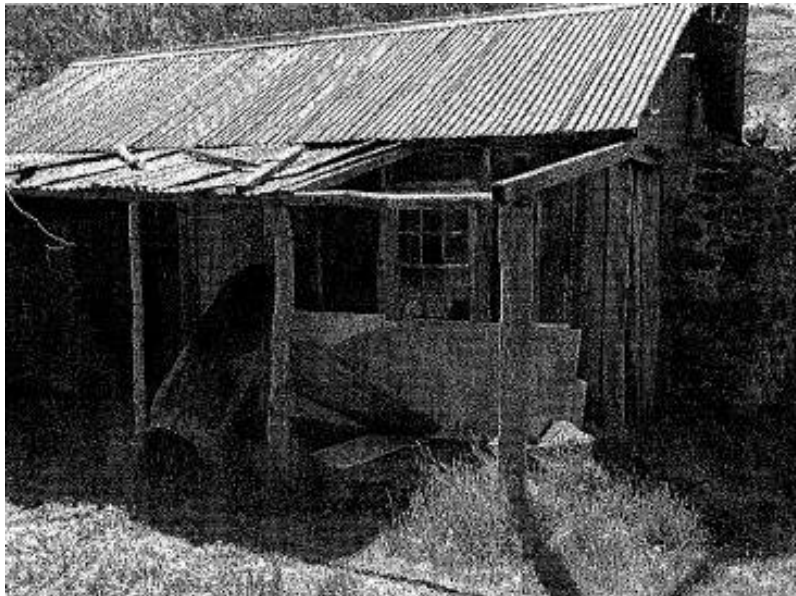


Victorian Heritage Database Report

HO200 - Hill, later Birch farm complex, 945 Eltham Yarra Glen Road, Watsons Creek



Location:

945 Eltham Yarra Glen Road WATSONS CREEK, NILLUMBIK SHIRE

Heritage Status / Level of Significance:

Included in Heritage Overlay

Heritage Overlay Number: HO200

Listing Authority: Nillumbik Shire

Statement of Significance:

HERITAGE VALUE 2005: Local

SIGNIFICANCE ASSESSMENT

What is significant?

Fabric associated with:

- the Victorian-era,
- the Hill & Birch family tenure.

How is it significant?

Hill family later Birch family complex is historically and architecturally significant to the Shire:

- for the distinctive and early building techniques displayed in its construction (vertical slabs) (Criterion B2)
- for the association with pioneering families of the Christmas Hills area, Hill and Birch (Criterion A4, H1)
- for the informal nature of the land tenure, particularly given the number of buildings in the complex, tenure typically associated with gold mining areas such as this one (Criterion A4).

Description

DESCRIPTION

The house has a steep but simply gabled roof form clad with corrugated iron, vertical adzed hardwood slab front wall construction, split palings to the gable ends; rubble freestone chimney at one end (with added gsi flue), pole-framed verandah (rebuilt?); six-pane double-hung sash windows; T&G bead-edge boarded ledged & braced door; and paling clad rooms added at verandah ends. A slab-clad large fireplace is at the north corner of the house, with a gsi upper cladding added and an internal lining of rubble stone.

The rear facade is different construction, being drop-slab, and sits beneath a rear skillion addition to the main gabled form: this may be more recent construction. The house appears to have been once set up for public display and may have been recreated in part for that purpose.

Outbuildings are reached by a track along the east side of the house, including what may have been a creamery (typical standard inter-war design clad with corrugated iron and lined with 1938 Lysaght Queens Head Australia galvanised sheet iron) and a paling clad gabled out-house. Timber outbuildings of differing eras are to the north-west of the house, with pole framing and paling infill construction and Redcliffe brand corrugated iron. Post and rail (front) and split paling (rear) fence remnants line the front boundary. Pepper trees part of house yard landscape .

Integrity

(See above)

Outbuildings in poor repair.

Heritage Study / Consultant	Nillumbik - C13 Heritage Stage 2 Final Report Revised Citation , Graeme Butler and Assoc., 2001
Construction Date Range	
Architect / Designer	
Municipality	NILLUMBIK SHIRE
Other names	
Hermes number	118819
Property number	

This place/object may also be State heritage listed. Check the Victorian Heritage Database. For further details, contact the local Council or go to Planning Schemes Online