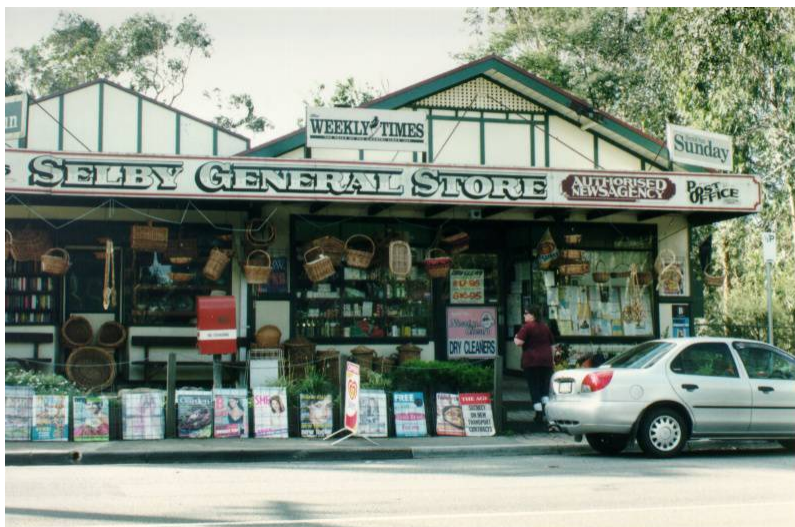


Victorian Heritage Database Report  
**Selby General Store**

---



**Location:**

117 Belgrave-Gembrook Road, Selby VIC 3159 - Property No 59638

**Heritage Status / Level of Significance:**

Included in Heritage Overlay

**Heritage Inventory (HI) Number:**

**Listing Authority:** HI

**Heritage Overlay Number:** HO297

**Statement of Significance:**

The Selby General Store has high local significance as an important district business located near the Selby railway station, which has served local customers and tourists from the 1920s, when Selby was said to have a greater weekend population than Belgrave.

**Description**

The Selby General Store is located within the small commercial centre of Selby on the Belgrave Gembrook Road, close to the Selby railway station. It includes a rectangular plan, gable roofed building with a more recent skillion roofed addition to the west. The single storey shop is raised above street level and has a narrow, elevated walkway extending the length of the General Store with a modern cantilevered verandah overhead.

The General Store is a single fronted shop dating from the 1930s with a gable end roof form and a symmetrical facade. The gable end has a fibrous cement cladding with strapped timber to the edges and a small triangular lattice vent below the apex of the gable. There is a minimal roof overhang with boxed eaves.

The symmetrical shopfront has a centrally located, recessed front door with splayed panels to either side, flanked by large rectangular windows. The openings are timber framed with multi-pane highlight opaque glass windows. Materials include fibrous cement sheet to the southern elevation and timber boards to the east.

The more recent addition to the west has a similarly detailed symmetrical shopfront, with a central, recessed door and square windows. The skillion roof is obscured from the street by a gabled parapet decorated with vertical timber straps.

The interior of the shop retains some of its original features including a pressed metal ceiling beaded timber dado. The former external wall to the west includes openings providing access to the modern extension.

Good

Altered

Heritage Study / Consultant	Yarra Ranges - Shire of Yarra Ranges Heritage Study, Context Pty Ltd, 2000
Construction Date Range	
Architect / Designer	
Municipality	YARRA RANGES SHIRE
Other names	
Hermes number	115770
Property number	59638

*This place/object may also be State heritage listed. Check the Victorian Heritage Database. For further details, contact the local Council or go to Planning Schemes Online*