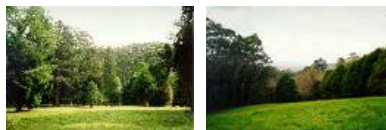


Victorian Heritage Database Report
Mt Dandenong Arboretum



Location:

65-67 Ridge Road, MOUNT DANDENONG VIC 3767 - Property No 21889

Heritage Status / Level of Significance:

Included in Heritage Overlay

Heritage Inventory (HI) Number:

Listing Authority: HI

Heritage Overlay Number: HO245

Statement of Significance:

This property has local, and may have regional significance, as an example of an arboretum established in 1929, comprising 18 acres of conifers and exotic trees. These were popular garden plantings in the Dandenongs during the 1920s, 1930s and later.

Description

Mt Dandenong Arboretum is located on Ridge Road, on the eastern slopes of the Dandenong Ranges, close to the main ridge. There are views to Silvan from the upper areas of the Arboretum, and an area of remnant forest in the gully provides a contrasting backdrop.

The Arboretum has been planted with exotic trees, grouped according to species (eg. conifers, elms, oaks etc). Many of the trees are large mature specimens. The understorey is grass. Many of the trees are labelled, and some are noted as being on the National Trust's Register of Significant Trees. A number of trees have been removed on the lower slopes of the Arboretum, giving this area a poor appearance.

A car park and toilet block has been built close to Ridge Road. There are several informal paths through the Arboretum.

Good

Minor Modifications

Heritage Study / Consultant	Yarra Ranges - Shire of Yarra Ranges Heritage Study, Context Pty Ltd, 2000
Construction Date Range	
Architect / Designer	
Municipality	YARRA RANGES SHIRE
Other names	
Hermes number	115596
Property number	21889

This place/object may also be State heritage listed. Check the Victorian Heritage Database. For further details, contact the local Council or go to Planning Schemes Online