

## SACRED HEART CONVENT AND COLLEGE



1 sacred heart convent  
& college retreat rd  
newtown front view



sacred heart convent &  
college reatreat road  
newtown front elevation  
publication



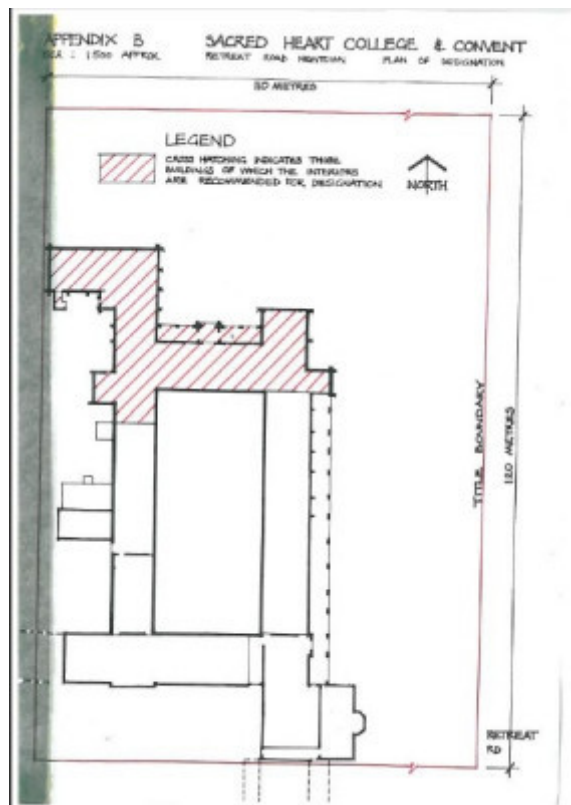
sacred heart convent &  
college retreat rd newtown  
chapel front



sacred heart convent &  
college retreat rd newtown  
entrance



sacred heart convent &  
college retreat rd newtown  
rear building



H0555 h0555 plan

## Location

61 RETREAT ROAD NEWTOWN, GREATER GEELONG CITY

## Municipality

GREATER GEELONG CITY

## Level of significance

Registered

## Victorian Heritage Register (VHR) Number

H0555

## Heritage Overlay Numbers

HO220

## VHR Registration

July 11, 1984

## Heritage Listing

## Statement of Significance

Last updated on - June 22, 1999

The Sacred Heart Convent of Mercy was established in 1859-60 in a large colonial single storey mansion house 'Sunville' erected c 1850 for J W Belcher, and acquired by the Catholic Church in 1855. J.L. Shaw, Geelong architect, designed the original orphanage building in 1864 and the boarding school of 1869, with the new convent building being erected 1872-74 to designs by noted church architect, T.A. Kelly. This complex of buildings, mainly of bluestone with Barrabool freestone dressings, is one of the finest convents in Victoria suitably styled in the Gothic Revival traditions and with important associations with the foundation of Catholic education in Victoria.

*[Geelong Region Historic Buildings & Objects Study]*

## Permit Exemptions

### General Exemptions:

General exemptions apply to all places and objects included in the Victorian Heritage Register (VHR). General exemptions have been designed to allow everyday activities, maintenance and changes to your property, which don't harm its cultural heritage significance, to proceed without the need to obtain approvals under the Heritage Act 2017.

**Places of worship:** In some circumstances, you can alter a place of worship to accommodate religious practices without a permit, but you must [notify](#) the Executive Director of Heritage Victoria before you start the works or activities at least 20 business days before the works or activities are to commence.

**Subdivision/consolidation:** Permit exemptions exist for some subdivisions and consolidations. If the subdivision or consolidation is in accordance with a planning permit granted under Part 4 of the *Planning and Environment Act 1987* and the application for the planning permit was referred to the Executive Director of Heritage Victoria as a determining referral authority, a permit is not required.

Specific exemptions may also apply to your registered place or object. If applicable, these are listed below. Specific exemptions are tailored to the conservation and management needs of an individual registered place or object and set out works and activities that are exempt from the requirements of a permit. Specific exemptions prevail if they conflict with general exemptions.

Find out more about heritage permit exemptions [here](#).

Construction dates	1864,
Architect/Designer	Shaw, Joseph L,
Heritage Act Categories	Registered place,
Hermes Number	880
Property Number	

---

## History

Associated People: T A Kelly;

## Extent of Registration

### AMENDMENT OF REGISTER OF HISTORIC BUILDINGS

Historic Building No. 555 Sacred Heart Convent and College, Retreat Road, Newtown (the interiors and exteriors of the convent, chapel and belfry tower, the exteriors of the 1864 bluestone building and the balance of the quadrangle buildings including the quadrangle and the land defined on the plan held by the Department of Planning but excluding the brick classrooms).

[Victoria Government Gazette No. 77 11 July 1984 p. 2352]

*This place/object may be included in the Victorian Heritage Register pursuant to the Heritage Act 2017. Check the Victorian Heritage Database, selecting 'Heritage Victoria' as the place source.*

*For further details about Heritage Overlay places, contact the relevant local council or go to Planning Schemes Online <http://planningschemes.dpcd.vic.gov.au/>*