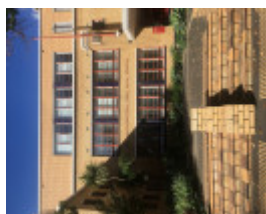


# MACROBERTSON GIRLS' HIGH SCHOOL



MacRobertson Girls' High School May 2020



MacRobertson Girls' High School May 2020



MacRobertson Girls' High School May 2020



MacRobertson Girls' High School May 2020



MacRobertson Girls' High School May 2020



MacRobertson Girls' High School May 2020



MacRobertson Girls' High School May 2020



MacRobertson Girls' High School May 2020



MacRobertson Girls' High School May 2020



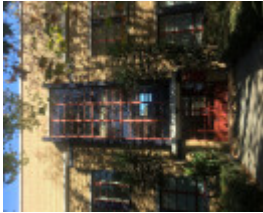
MacRobertson Girls' High School May 2020



MacRobertson Girls' High School May 2020



MacRobertson Girls' High School May 2020



MacRobertson Girls' High School May 2020



MacRobertson Girls' High School May 2020



MacRobertson Girls' High School May 2020



MacRobertson Girls' High School May 2020



MacRobertson Girls' High School May 2020



MacRobertson Girls' High School May 2020

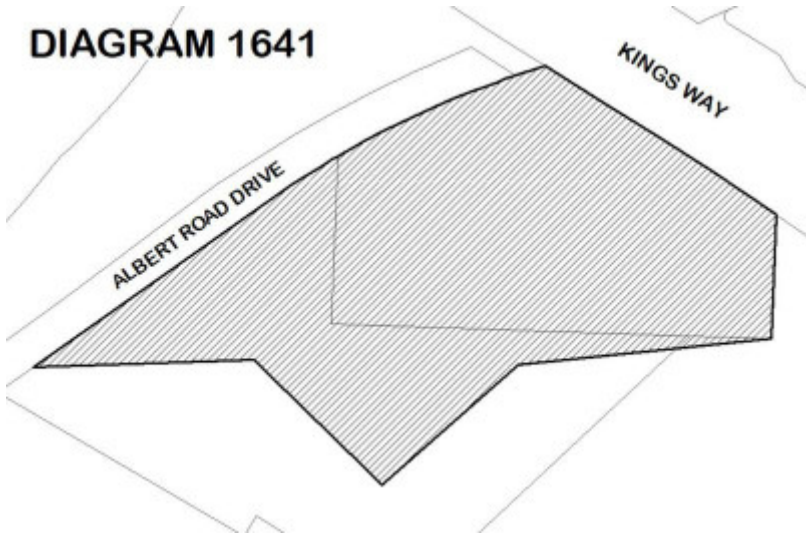


DIAGRAM 1641 V3

**Location**

350 KINGS WAY MELBOURNE, PORT PHILLIP CITY

**Municipality**

PORT PHILLIP CITY

**Level of significance**

Registered

**Victorian Heritage Register (VHR) Number**

H1641

## **Heritage Overlay Numbers**

HO176

## **VHR Registration**

August 20, 1982

## **Amendment to Registration**

July 8, 2021

## **Heritage Listing**

Victorian Heritage Register

---

## **Statement of Significance**

Last updated on - June 28, 2021

# **What is significant?**

The MacRobertson Girls' High School, designed by architect Norman H Seabrook and constructed in 1934, a Modernist multi-storey brick school building with a clock tower and paved courtyard.

# **How is it significant?**

The MacRobertson Girls' High School is of architectural and historical significance to the State of Victoria.

# **Why is it significant?**

The MacRobertson Girls' High School is of historical significance for its association with noted industrialist and philanthropist Sir MacPherson Robertson, who donated over £100,000 to the State of Victoria as a gesture of goodwill and thanks in the year of its centenary allowing for the establishment of the new school. The school is also of significance for its associations with its direct antecedents: the Model School in Spring Street; the Melbourne Continuation School, Victoria's first state secondary school, later renamed Melbourne High School; and Melbourne Girls' High School, the first single sex girls' state secondary school in Victoria. Each of these schools has played a notable part in the evolution of the state's education system, as has the MacRobertson Girls' High School. [Criterion A]

The Modernist design of MacRobertson Girls' High School, by architect Norman H Seabrook, was revolutionary in Victoria for its time. It was informed by Seabrook's firsthand knowledge of the work of leading contemporary Dutch architect Willem Dudok and his followers on the Continent and in Britain. MacRobertson Girls' High School was influential in the introduction of the Modernist modes of architecture and the growth in their acceptance in the 1930s in Victoria. The design of the school was refined in its conceptual clarity, its internal traffic efficiency, and

skilful zoning of various educational activities. MacRobertson Girls' High School set a new standard for school architecture by the Public Works Department in subsequent decades under chief architect Percy Everett. [Criterion D]

The MacRobertson Girls' High School is of historical significance for its association with the notable and prolific architect Norman H Seabrook, who later co-founded the renowned Melbourne architectural firm Seabrook and Fildes. Seabrook has been recognised in subsequent decades as a significant and talented architect and a major figure in the evolution of twentieth century architecture in Victoria. [Criterion H]

## Permit Exemptions

### General Exemptions:

General exemptions apply to all places and objects included in the Victorian Heritage Register (VHR). General exemptions have been designed to allow everyday activities, maintenance and changes to your property, which don't harm its cultural heritage significance, to proceed without the need to obtain approvals under the Heritage Act 2017.

**Places of worship:** In some circumstances, you can alter a place of worship to accommodate religious practices without a permit, but you must [notify](#) the Executive Director of Heritage Victoria before you start the works or activities at least 20 business days before the works or activities are to commence.

**Subdivision/consolidation:** Permit exemptions exist for some subdivisions and consolidations. If the subdivision or consolidation is in accordance with a planning permit granted under Part 4 of the *Planning and Environment Act 1987* and the application for the planning permit was referred to the Executive Director of Heritage Victoria as a determining referral authority, a permit is not required.

Specific exemptions may also apply to your registered place or object. If applicable, these are listed below. Specific exemptions are tailored to the conservation and management needs of an individual registered place or object and set out works and activities that are exempt from the requirements of a permit. Specific exemptions prevail if they conflict with general exemptions.

Find out more about heritage permit exemptions [here](#).

### Specific Exemptions:

#### Permit Exemptions

##### Permit exemptions for interiors (1934 Building)

- Works to maintain bathrooms, kitchens and laboratories, including installing new appliances, re-tiling and the like.
- Removal or replacement of carpets and/or flexible floor coverings.
- Installation, removal or replacement of existing electrical wiring. If wiring is currently exposed, it should remain exposed. If it is fully concealed it should remain concealed.
- Removal or replacement of devices for the hanging of wall mounted artworks in existing locations.
- Maintenance, repair and replacement of light fixtures, tracks and the like.
- Removal or replacement of smoke and fire detectors, alarms and the like.
- Repair, removal or replacement of existing ducted, hydronic or concealed radiant type heating provided that the central plant is concealed, and that the work is done in a manner which does not alter building fabric.
- Installation of plant within the roof space, providing that it does not impact on the external appearance of the building or involve structural changes.
- Installation, removal or replacement of bulk insulation in the roof space.

## Landscape/outdoor areas

### *Hard landscaping and services*

- Subsurface works to existing garden watering and drainage systems provided these are outside the canopy edge of trees. Existing lawns, gardens and hard landscaping, including paving and paths are to be returned to the original configuration and appearance on completion of works.
- Maintenance, repair and replacement of existing services such as plumbing, electrical cabling, surveillance systems, pipes or fire services which does not involve changes in location or scale.
- Like for like repair and maintenance of existing hard landscaping including carparks, footpaths and driveways where the materials, scale, form and design is unchanged.
- Removal or replacement of external signage provided the size, location and material remains the same.
- Installation of physical barriers or traps to enable vegetation protection and management of vermin such as rats, mice and possums.
- Repair, removal and replacement of flagpoles (not part of the 1930s design or fabric of the place) to the west of the 1934 Building, providing replacements are in the same locations.

### *Gardening, trees and plants*

- The processes of gardening including mowing, pruning, mulching, fertilizing, removal of dead or diseased plants (excluding trees), replanting of existing garden beds, disease and weed control and maintenance to care for existing plants.
- Removal of tree seedlings and suckers without the use of herbicides.
- Management and maintenance of trees including formative and remedial pruning, removal of deadwood and pest and disease control.
- Emergency tree works to maintain public safety provided the Executive Director is notified within seven days of the removal or works occurring.
- Removal of environmental and noxious weeds.

Construction dates	1934,
Architect/Designer	Seabrook & Fildes, Seabrook, Norman Hugh,
Heritage Act Categories	Registered place,
Other Names	SIR MACPHERSON ROBERTSON GIRLS HIGH SCHOOL,
Hermes Number	2961
Property Number	

---

## Extent of Registration

Heritage Act 2017 NOTICE OF REGISTRATION As Executive Director for the purpose of the Heritage Act 2017, I give notice under section 53 that the Victorian Heritage Register is amended by modifying a place in the Heritage Register: Number: H1641 Category: Registered Place Place: MacRobertson Girls' High School Location: 350 Kings Way, Melbourne Municipality: Port Phillip City All of the place shown hatched on Diagram 1641 encompassing all of Crown Allotment 2104 City of South Melbourne Parish of Melbourne South and part of Crown Allotment 2103 City of South Melbourne Parish of Melbourne South and part of Crown Allotment 2111 City of South Melbourne Parish of Melbourne South. 8 July 2021 STEVEN AVERY Executive Director  
*This place/object may be included in the Victorian Heritage Register pursuant to the Heritage Act 2017. Check the Victorian Heritage Database, selecting 'Heritage Victoria' as the place source.*

For further details about Heritage Overlay places, contact the relevant local council or go to Planning Schemes Online <http://planningschemes.dpcd.vic.gov.au/>